

Dedicated to the care and preservation of our lakes, for the enjoyment and safety of all.

# June 2003

## Second issue of the year

Volume 7, Number 2

2003, Wabana Chain of Lakes Association

Editor: Bill Downing, wdowning@uslink.net

38067 Forest Lane, Grand Rapids, MN 55744 218-326-4730

1834 Simpson St, Falcon Heights, MN 55113 651-644-9625

### Officers:

President: Dick Chambers 326-2809

Vice President: Bud Sage 326-4535

Treasurer: Cathy Rudolph 327-0820

Secretary: Susan Lick 326-6837

### Advisory Committee.

All the above, plus:

John Adams 326-2206

Steve Bryant 326-5473

Nancy Ellsworth 326-8056

David Lick 326-6837

Joel Solomon 326-5177

George Wilbert 327-1018

John Zimmerman 326-1020

| <b>TABLE OF CONTENTS:</b>              | <b>PAGES:</b> |
|--|---------------|
| PRESIDENTS LETTER                      | 1             |
| MINUTES OF MAY 24 <sup>TH</sup> , 2003 | 1-3           |
| MANAGEMENT PLAN                        | 3-7           |
| LETTER, SAGE TO ART NORTON             | 4             |
| THE REVISED PLAN                       | 4-6           |
| MAP OF WATERSHEDS                      | 7             |
| MISSING MAP MYSTERY                    | 8             |
| JUNE 21 MEETING PROGRAM                | 8             |

# June 21: EAGLES!

Congratulations to Jenni Heissel for receiving the first Wabana Community Scholarship. The Chain of Lakes Association wishes her and all the graduates the best of luck in the future.

### PRESIDENTS LETTER

We had great attendance at our first meeting of the summer, with many topics discussed.

Our Lake Management Plan has been completed and now it will be the Association's task to move forward. We have started a Communications Committee and hope to start other committees. We need members' ideas on this. I hope that you will attend the next meeting. It will be on **June 21st**. During the meeting we will be discussing the annual picnic. We have decided on July 19th as the date. We are looking for volunteers to help out with the planning. The picnic is always a fun time.

Please enjoy our lakes and remember to be safe.

Dick

### MINUTES OF MAY 24<sup>TH</sup>, 2003

#### The Wabana Chain of Lakes Association

Program committee volunteers Bill Berg and Susan Hawkinson, were introduced by Chairman Chambers. Bill Berg announced upcoming programs; June - Eagles of the Chippewa National Forest and August - Wolves. Pageant of Grouse was the current program and Bill introduced a video displaying the four kinds of grouse native to northern Minnesota.

The regular business meeting was opened with the introduction of Catherine McLynn, Itasca County Commissioner and regular member of the Wabana Chain of Lakes Association. All in attendance introduced themselves.

Minutes of September 21st, 2002 were approved as printed in the November 2002, Wabana Chain of Lakes newsletter.

**Treasurer's Report**, read by Cathy Rudolph:

Balance as of 9-21-03 \$6,135.10

Received:

Dues \$ 560.00

Contributions \$ 100.00

Cups \$ 102.50

Memorials for Betty Bunge \$ 25.00

Total Received: \$ 787.50

Paid Out:

Printing \$ 401.03

Plaque for J.Rowe \$ 222.49

Tree memorial for J. Rowe \$ 27.80

Total Paid Out: \$ 651.42

Balance as of 5-24-03 \$ 6,271.18

Paid households as of 5-24-03 132

Newsletter printing costs were questioned, leading to a discussion about the distribution of the newsletter to the entire township. Members reaffirmed this decision was and still is, focused on the spirit of citizen education. Joe Stevens agreed to look into bids for the costs of printing the newsletter. Bill Downing will include e-mail distribution as an option. The treasurer's report was approved.

**The Wabana Chain of Lakes management plan** was approved by the Itasca County Soil and Water Conservation District. Chairman Chambers read a letter from Art Norton, including the final payment of \$1,067. in grant funds and congratulating the Wabana Chain of Lakes Association for their leadership. David Lick representing ICOLA (Itasca Coalition of Lake Associations) reported a few of the proposed lake associations are delinquent with their plans and possibly the remainder of the grant funds may be distributed to associations with approved plans. Also David stated that a number of lake associations have made financial contributions to the ICOLA organization and suggested our association consider a contribution as well..

**2003 meeting dates** were announced by Chairman Chambers; May 24<sup>th</sup>, June 21<sup>st</sup>, July 19<sup>th</sup> August 16<sup>th</sup> and September 20<sup>th</sup>. Nancy Ellsworth moved that the annual picnic date be set for July 19<sup>th</sup>, fol-

lowing discussion of many options the motion was seconded and approved.

**Wabana Township's new addendum to the Itasca County Ordinance** was first utilized by Bob Sage of Bluewater Lake. Bob's opinion of the process was it worked very well. Bill Berg stated that the north-end Trout Lake residents are part of Balsam Township and the new ordinance addendum does not apply. Catherine McLynn stated that a petition of 20 legal voters from a township could be used to propose a change in township boundaries to the county board. Dick Chambers will make sure the "Wabana Warbler" township newsletter is mailed to north-end Trout Lake residents in the Wabana Chain of Lakes Association.

**Minnesota Lake Association challenge grant** pertaining to shoreline restoration, was outlined in a letter read by Chairman Chambers. Since the deadline for this year's grant is June 20<sup>th</sup> a committee of George Colburn, David Lick and Dick Chambers will look into a proposal for next year. George Colburn will contact Ted Voneida to see if he will also participate in the grant committee.

**Wabana Chain of Lakes Management Plan activities** have started in the area of communications. Gig Wilson, Tia Pace and Dick Chambers will follow up on findings at the next meeting.

**Meeting agenda ideas and brainstorm session** was opened to the membership by Chairman Chambers. Steve Bryant suggested working on aspects of the new lake management plan. John Adams and Dick Chambers completed a new revision over the winter, which included a picture of the chain of lakes and the watershed areas. Bob Long suggested the picture be enlarged and presented to the township for hanging on the walls of the township hall. Chairman Chambers will follow up on this idea with the township board.

Bill Downing made a motion to send out the revised lake management plan and map through the Wabana Chain of Lakes Association Newsletter. The motion was seconded and approved.

Bud Sage led the entire membership in thanking John Adams, Steve Bryant, John Zimmerman, Dick Chambers and other members who have volun-

teered their time to continually forward the lake management plan project.

**Joyce Estate history** was revisited through a letter read by Chairman Chambers from John Lofgren of the proposed 1973 sale of the estate through the Nature Conservancy.

**Other business from the membership:**

Cathy Rudolph requested a committee to work on the association's logo and items (hats, coffee mugs, t-shirts) for sale. Bud Sage and Tia Pace volunteered to help.

Kim Oja raised the issue of beavers building under the bridge into Trout Lake. In the past Harold Unger continually worked to maintain the bridge area. Members discussed options and Bill Berg explained the beavers' activity and the best practices for beaver and bridge maintenance. A committee of George Klacan, Joe Stevens, Gary Oja, Dennis Koewler, Bud Sage and George Wilbert volunteered to assist in taking apart the beaver structures by hand and hauling it away from the bridge area. Bill Berg will obtain the necessary permit from the D.N.R.

The Value of Lakeshore and Water Clarity" is an open public forum scheduled for May 30<sup>th</sup> at the Bass Brook Community Center, announced David Lick.

Lake Country Power's policy and practice of spraying herbicides under power lines was described by John Downing. Alerting folks to pay attention to erosion potential, John told of a near disaster of a family cabin eroding down a bluff to the lake, last year after the power company did clear cutting under all power lines in the area. John followed up with Lake Country Power and learned this year herbicide is scheduled to be sprayed under all lines to inhibit plant and tree growth. John encouraged everyone with erosion potential to be proactive and work to avoid erosion of bluffs and other vulnerable areas under power lines.

No program scheduled for July 19<sup>th</sup> announced Bill Berg due to the regular meeting and the annual picnic in the afternoon.

The final meeting for public letters to address a proposed Itasca County Ordinance addendum is June 2<sup>nd</sup> 5-8pm reported David Lick. The proposed

addendums focus is to be more environmentally conscious including examples of gravel pit developments, heavy density residence development and communication towers close to lakes. This will conclude the end of the public input process; recommendations will go to the county board of commissioners.

**The meeting was adjourned** at 11:45 am.

**Next meeting** will be June 21<sup>st</sup>, 8:30 coffee and social, 9:00 a.m. program, and regular meeting to follow.

Respectfully submitted, Susan Lick secretary

## Note.

**Nearly all of the rest of this *Chain Letter* is devoted to the Management Plan—at the meeting of May 24<sup>th</sup> the membership said it wanted the whole plan published to study before the June 21<sup>st</sup> meeting. It takes a lot of space! We are therefore postponing some great things until July: Wabana dam-building pictures from Agnes Blackmore; another fine article from Bill Berg on logging roads; an article on walleyes in our chain from Jack Velzen. What are you sending? Deadline for copy: July 7, 2003.**

### MANAGEMENT PLAN

*The Advisory Committee has revised the Plan significantly since we last published a copy of it, and at the May 24<sup>th</sup> meeting (see Minutes) the membership decided we should publish the entire revised document in this Chain Letter. The membership discussed some changes at the September 2002 meeting, and the Advisory Committee acted on these during the winter.*

*Another stimulus for changing the Plan was a letter from Art Norton of the Itasca Soil and Water Conservation District, in which he made several suggestions for modification. The Advisory Committee worked the document over, and on March 18, 2003, Vice President Bud Sage sent the revised Plan to Mr. Norton, together with a letter, taking note of changes made.*

*So the membership can clearly know what the changes have been, that letter is on page 4.*

**LETTER, BUD SAGE TO ART NORTON**

**Wabana Chain of Lakes Association**

**Mr. Dick Chambers President**

**36066 McLaughlin Drive Grand Rapids, MN 55744**

March 18, 2003

Mr. Art Norton, Itasca County Water Planner  
Itasca County Soil and Water Conservation District  
1889 East Highway 2  
Grand Rapids, MN 55744

Dear Art,

Thank you for your letter of February 11, 2003, commenting on the Wabana Chain of Lakes Management Plan. The purpose of this letter is to respond to each of your comments and to officially invoice the Itasca County SWCD for the final Lake Management. Planning Grant payment.

Our response to each of your comments:

1. A colored watershed map, as supplied by the Itasca County SWCD, has been attached to the plan.
2. Since the Plan is a "living document", subject to change, we do not feel that priorities for all Action Items can be identified now. However, we changed Implementation Strategy 1 to identify a process whereby the Advisory Committee will recommend annual priorities for the Association to discuss at the first meeting each year.
3. Implementation Strategy 3 has been changed so that at least one Focus Area is reviewed annually.
4. Focus Area One, Objective 1 C and Action Item 1 C have been changed to generically address all appropriate regulatory and land-management agencies and companies. Also, Focus Area One, Action Item 1B was changed to address the need for a group of experts to analyze existing water quality data.
5. We do not believe we can include a draft of the Basic Beliefs at this time. As you have noted, we believe that some of the subject matter is potentially contentious, and therefore believe that "ownership" by the entire Association will be critical to successfully drafting the Beliefs. We are therefore planning on establishing committees of association members to help draft selected Beliefs, starting this summer. We will be sure to send you copies of all draft Beliefs, as they are developed.
6. The Advisory Committee believes that the Basic Beliefs for Focus Area Three will include, but not necessarily be limited to, Best Management Practices. Therefore, the introductory paragraph and objective 3B have been changed to address the relationship between these two documents.

As John Adams discussed with you on the phone recently, the Wabana Chain of Lakes Association approved the draft management plan last summer. The changes you have suggested were well-received and have been incorporated in the Plan, as detailed above and in the attached, final plan. The Advisory Committee, on behalf of the general association, has approved the final plan. We therefore request final payment of the Lake Management Planning Grant.

If you should have any questions or comments, please do not hesitate to contact me 218/326-2809, or John Adams at his DNR office at 218/327-4110.

Lauren W. Sage Vice President,  
Wabana Chain of Lakes Association

**THE REVISED PLAN**

*Please bring this Newsletter with you to the meeting on June 21. We will have a few Plan copies available at the meeting, but it will save the Association money if you'll bring your own.*

**MANAGEMENT PLAN  
FOR THE WABANA CHAIN OF LAKES**

by The Wabana Chain of Lakes Association  
March, 2003

**PREAMBLE** - This Management Plan for the Wabana Chain of Lakes, hereafter called the "Plan", was developed by The Wabana Chain of Lakes Association, hereafter called the "Association".

The Plan is based on

- a) products of the August 18, 2001 Visioning Session, as summarized by Mr. Ed Zabinski,
- b) a revised draft of Mr. Zabinski's summary in the September, 2001 Chain Letter,
- c) written Advisory Committee comments in response to Mr. Zabinski's summary, and
- d) additional comments solicited during the September 23, 2001 Association meeting.

The Plan consists of a *Mission Statement* followed by three main geographic "*Focus Areas*":

- 1) The Aquatic Environment,
- 2) Activities on the Water, and
- 3) Activities on the Upland Watershed (see attached watershed map).

Each Focus Area is followed by a list of *Objectives* specifying what the Association wants to accomplish. Following the Objectives is a list of *Action Items* to accomplish the Objectives, and a list of *Measurements* of success, which will be used to gauge accomplishments. The final section of the Plan, *Implementation Strategy*, addresses how the Association intends to implement the Plan.

The Plan recognizes that many of the Objectives/Action Items apply to more than one Focus Area; however, each Objective/Action Item is discussed only in the Focus Area where it is physically located. For example, management of home septic systems is addressed in Focus Area Three, Activities on the Land, even though septic systems can have a significant impact on lake water quality, which is addressed in Focus Area One, The Aquatic Environment.

The Association intends the Plan to be a dynamic document, subject to periodic modification to reflect accomplishments and address new issues.

The Association recognizes the inter-dependency of all the physical zones within the Chain's watershed, and understands that the activities of people living on the lakes and within the watershed, as well as visitors to the area, can have significant impacts on the quality and health of the total lake environment.

Further, it is the intent of the Association to play an active role in the management of all important activities that effect the quality of the Chain's resources. This will be accomplished by working with landowners and land management agencies, through education and information exchange, to achieve each of the stated Goals.

The Association recognizes that education and involvement of a majority of the Chain's residents is the only means by which the Goals in the Plan can be accomplished, therefore strengthening the Association membership is a key component of the Implementation Strategy. Educational efforts are woven into the Action Items for each Focus Area.

**MISSION STATEMENT** - It is the mission of the Wabana Chain of Lakes Association to cooperatively promote appropriate land and water uses designed to maintain or achieve high quality environmental and living conditions. The Association will accomplish this mission by making sure our decisions balance the increasing growth in residency, visitor usage, and new watercraft sizes and modes with preserving the lake's historic beauty, quiet, and non-developed atmosphere for all present and future users

### **FOCUS AREA ONE: THE AQUATIC ENVIRONMENT**

Focus Area One targets the aquatic environment below the water surface, including water quality, fisheries, fish habitat, and aquatic ecosystems. Objectives and Action address only those activities that have a direct and immediate connection with the water. There are other Objectives within other Focus Areas in the Plan which also address indirect impacts on the water, such as management of home septic systems, use of fertilizers, management of farm and pet animals, and forest management practices.

#### **Objectives:**

- 1A: Identify water quality trends and relationships, and continue to build an understanding of natural lake functioning and human impacts.
- 1B: Maintain, and where possible improve, current water quality.
- 1C: Establish a relationship with each appropriate regulatory and land management agency and private company within the watershed for information exchange, education, and evaluation of cooperative efforts.
- 1D: Prevent the introduction of milfoil and other aquatic exotics.

#### **Action Items to Accomplish Objectives:**

- 1 A: Continue, and expand where appropriate, monitoring of phosphorus, nitrogen, chlorophyll, and secchi disk readings, as dictated by analysis of historic data.

- 1B: Organize a group of water quality experts and interested individuals to help interpret existing Chain water quality data, and develop guidelines for future monitoring.
- 1C: Schedule presentations and discussions by appropriate regulatory and land management agency and company personnel to share data and information, and evaluate potential cooperative management activities.
- 1D: Following each presentation by the DNR, the Advisory Committee shall meet, if appropriate, to recommend new Goals/Action Items/Measurements.
- 1E: Develop an Action Plan to keep the Association educated about the introduction and effect of exotics.

#### **Measurements of Success:**

- 1 A: An understanding of natural water quality fluctuations and relationships.
- 1B: Prevention and/or reversal of deteriorating water quality trends.
- 1C: No interruptions in the collection of water quality data.
- 1D: No introduction of exotics.
- 1E: No deterioration in fish numbers, health, and habitat conditions.

### **FOCUS AREA TWO: ACTIVITIES ON THE WATER**

There are a variety of users and lake activities on the Chain. Increasing residential density, visitor usage, and large and new modes of watercraft further compound this activity. Following sound BASIC BELIEFS allows all users to be sensitive to and respectful of each others activities and to conduct those activities to maintain the unique beauty, quiet, and remote atmosphere of the Chain for all present and future users.

#### **Objectives:**

- 2A: Develop BASIC BELIEFS that include suggestions for lake user conduct designed to reduce conflicts and promote adherence to legal requirements.
- 2B: Provide for broad involvement, understanding, commitment and frequent feedback on the development and utility of the BASIC BELIEFS.
- 2C: Cooperate and participate in the decision-making processes of government agencies as their plans affect the BASIC BELIEFS.

#### **Action Items to Accomplish Objectives:**

- 2A: The Advisory Committee shall meet to scope out the content, framework, and development procedure for Focus Area Two BASIC BELIEFS, and publish them.
- 2B: Provide a supply of the BASIC BELIEFS to all Chain resort owners with a request that they mail a copy to their customers each year, and place a copy in each cabin.
- 2C: Provide copies of the BASIC BELIEFS at all lake entry points.
- 2D: Develop a survey to assess Chain land owners/users perception of the effectiveness of the BASIC BELIEFS.

**Measures of Success:**

- 2A: Completion and distribution of Focus Area Two BASIC BELIEFS.
- 2B: Periodic, active feedback by Chain owners/users on acceptance and effectiveness of the BASIC BELIEFS.
- 2C: Reduction in water surface use conflicts, complaints, and violations.

**FOCUS AREA THREE:**

**ACTIVITIES ON THE UPLAND WATERSHED**

Focus Area Three addresses activities within the upland watershed of the Chain, including the critical near-shore zone. The Association recognizes that any lake is the end product of all activities and water movement within its watershed, especially those in close proximity to the lake. Therefore, this section addresses many land use and recreational activities which potentially have an impact on water quality, the lake's aquatic ecosystem, and values of those living on the Chain. The Association recognizes the need for establishment of minimal, recommended behavioral norms, through development of, and volunteer compliance with, the BASIC BELIEFS. The BASIC BELIEFS for this Focus Area will include, at a minimum, Best Management Practices within the shoreland zone, but may also include additional, recommended practices.

**Objectives:**

- 3A: Achieve 100% compliance with Itasca County's septic system program within the time frame established by the county.
- 3B: Develop Focus Area Three BASIC BELIEFS, including appropriate Best Management Practices.
- 3C: Achieve voluntary compliance with appropriate Best Management Practices within the shoreland zone.
- 3D: Develop a relationship with each land-management agency (US Forest Service, State, County) and large private land holders (UPM Blandin, Potlatch, etc.) to periodically educate the Association about their activities that affect the Chain.
- 3E: Prevent excessive lakeshore erosion.
- 3F: Keep lake entry points clean and orderly.

**Action Items to Accomplish Objectives:**

- 3A: Continue replacing septic systems on the agreed-upon schedule with Itasca County.
- 3B: Review existing Best Management Practices for activities within the shoreland zone, and incorporate recommended practices into the BASIC BELIEFS.
- 3C: The Advisory Committee shall meet to scope out the content, framework, and development procedure for Focus Area Three BASIC BELIEFS, and publish them.
- 3D: Provide a supply of the BASIC BELIEFS to all Chain resort owners with a request that they mail a copy to their customers each year, and place a copy in each cabin.
- 3E: Provide copies of the BASIC BELIEFS at all lake entry points.

- 3F: Discuss the effectiveness of the BASIC BELIEFS, and any necessary changes, as appropriate.
- 3G: Develop a survey to assess Chain land owners'/users' perception of the effectiveness of the BASIC BELIEFS.
- 3H: Schedule presentations at future Association meetings by appropriate land management entities within the watershed.
- 3I: Complete an effective shoreline erosion survey and make technical recommendations.
- 3J: Periodically clean access landing sites.

**Measures of Success:**

- 3A: Stay on schedule with the septic replacement program.
- 3B: Completion and distribution of Focus Area Three BASIC BELIEFS.
- 3C: Periodic, active feedback by Chain owners/users on effectiveness of the Focus Area Three BASIC BELIEFS.
- 3D: Reduction in the number of complaints.
- 3E: Reduce shoreline erosion.
- 3F: Chain landings kept clean and orderly.

**IMPLEMENTATION STRATEGY:**

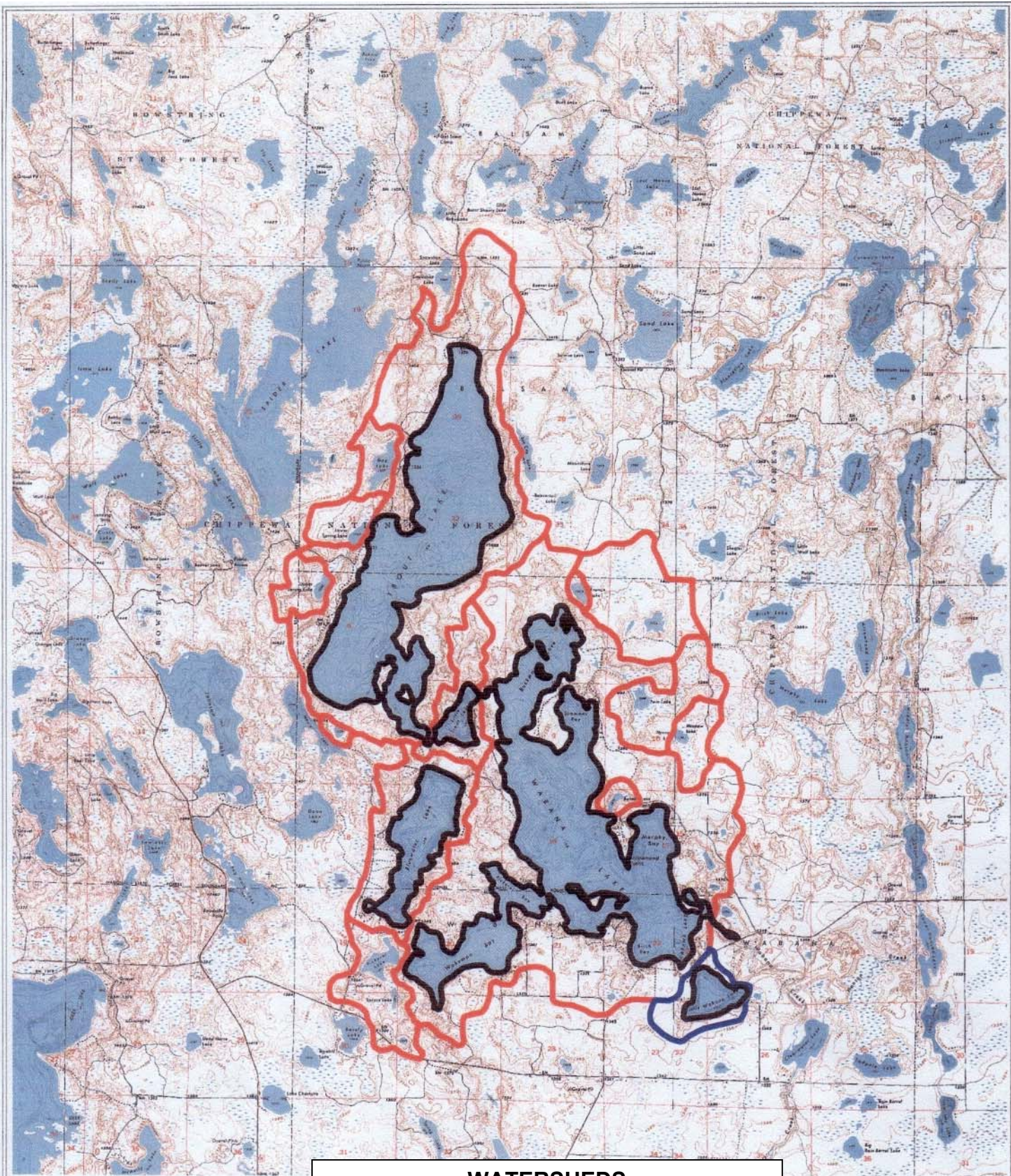
The Association recognizes that the Plan will only be effective if the Association communicates and cooperates effectively with all parties residing in and managing resources within the Chain. Therefore, the Association will take the following steps to assure that the Plan is dynamic and functional:

- 1) The Advisory Committee will meet each spring to identify the highest priority Action Items for the coming year, and will recommend these Action Items to the Association at the first meeting for implementation.
- 2) Develop a plan to increase attendance and participation in Association meetings and activities.
- 3) Review, and amend, where appropriate, at least one Focus Area annually to reflect constructive feedback and new areas of interest.
- 4) Establish a Newsletter Committee that works with the editor to increase the number and content coverage of the Newsletter throughout the year.
- 5) Encourage Association representation at all relevant public and political meetings.
- 6) Encourage an open line of communication with, and support from, all pertinent government agencies, businesses, and elected officials.
- 7) Develop and publicize a Web site.

**[MAP ON PAGE 7, IN COLOR IN ORIGINAL]**

**NOTE: Dues for 2003-2004 are due July 1. Your Newsletter should include a remittance envelope addressed to Cathy Rudolph, containing the information formerly included in a coupon to go with your dues. If you didn't get an envelope, please contact the Editor. You can mail dues or give your envelope to Cathy at the meeting on June 21, 2003.**





**WATERSHEDS**  
of the  
**WABANA CHAIN OF LAKES**  
*Wabana Chain of Lakes Association*

3000 0 3000 6000 Feet





### MYSTERY OF THE MISSING MAP

Some years ago, Betsy Downing found, among her grandfather T. H. Simmons' papers, a blueprint map of Wabana Township, dating from (probably) the early 1920s. She had a frame made for it, and presented it to the Chain of Lakes Association for hanging in the Township Hall. The Association had a plaque made to hang with it, and it became a fixture, well known to all of us. It is a priceless, one-of-a-kind map.

### THAT MAP HAS DISAPPEARED!

Without the knowledge of Township officials, someone has replaced the original blueprint map with another. Nobody seems to know how anyone could gain access to the Hall, or what motive would be. But given the value of the map, its theft is a serious offense. If someone borrowed it, they should return it at once.

**Reminder:** Bring in a new member, win a WCOLA coffee cup. Have the new member notify Cathy Rudolph.

Wabana Chain of Lakes Association  
Ms. Cathy Rudolph, Treasurer  
36542 Havenwood Drive  
Grand Rapids, MN 55744

# June 21 Meeting Program

### FROM BILL BERG:

The program for the June 21 meeting is **Bart Tobin and Bob Samuelson**, from the Blackduck Office of the **Chippewa National Forest**.

These two fellows are the **eagle chasers**. The ones who **climb lofty pines** to band chicks, fend off attacking adult eagles, and sometimes collect eagle chicks for introduction in other states. They've done this work for more than **20 years**. The program will consist of **slides and a video**. Those prone to airsickness and lofty heights should attend, but have your airsick medication handy.