

Dedicated to the care and preservation of our lakes, for the enjoyment and safety of all.

May 2003

First issue of the year

Volume 7, Number 1

2003, Wabana Chain of Lakes Association

Editor: Bill Downing, wdowning@uslink.net

38067 Forest Lane, Grand Rapids, MN 55744 218-326-4730

1834 Simpson St, Falcon Heights, MN 55113 651-644-9625

Officers:

President: Dick Chambers 326-2809
 Vice President: Bud Sage 326-4535
 Treasurer: Cathy Rudolph 327-0820
 Secretary: Susan Lick 326-6837

Advisory Committee.

All the above, plus:

John Adams 326-2206
 Steve Bryant 326-5473
 Nancy Ellsworth 326-8056
 David Lick 326-6837
 Joel Solomon 326-5177
 George Wilbert 327-1018
 John Zimmerman 326-1020

TABLE OF CONTENTS

PRESIDENT'S LETTER	1
2003 SUMMER MEETING DATES.	1
PROGRAM NOTES FROM BILL BERG.	1
MORE PROGRAMS, BILL BERG	2
WABANA TOWNSHIP'S ORDINANCE	2
WIND POWER MAKES LAKE SENSE.	4
A FULL TESTING YEAR	4
LIGHT SAVINGS	4
A FULL TESTING YEAR	5
FROM BILL BERG: LOGGING CAMP	5
HOT OFF THE PRESSES	6
MEMBERSHIP, DUES, ETC.	6
SHORELINE MODIFIED?	7

PRESIDENT'S LETTER

I hope everyone had a great winter. It's nice to move into spring after the long cold winter. We have another great summer ahead of us. We are so fortunate to have this resource to enjoy.

The Lake Association advisors are anxious to get into our lake management plan along with the members. We have received the final check of \$1067.00 for the completion of our lake management plan, and we will be discussing the plan this summer.

I attended the township monthly meeting this past Monday. It looks like the township ordinance on zoning is working well. My congratulations to our supervisors for a job well done.

Our first Wabana Chain of Lakes Association meeting for the summer will be May 24th. Hope to see you all there.

Dick Chambers

2003 SUMMER MEETING DATES. PLEASE MARK YOUR CALENDARS!

All on Saturday mornings:

May 24

(We will decide on the annual picnic date at the May meeting.)

June 21

July 19

Aug 16

Sept 20

Meetings begin at 8:30 for coffee and treats, with the program at 9:00 and the business meeting after the program.

It is more important than ever this year to have full attendance, since we will be deciding what will make up our Lakeshore Management Plan.

PROGRAM NOTES FROM BILL BERG.

May 24: The program for the May 24 WCOLA meeting will be a showing of portions of the video, Pageant of Grouse, which has spectacular footage of ruffed grouse drumming, sharp-tailed grouse dancing, prairie chickens booming, and spruce grouse clapping. Folks wondering just what those sounds in the woods are won't want to miss this.

Pageant of Grouse!

MORE ON PROGRAMS FROM BILL BERG:

The program for the June 21 WCOLA meeting will be on eagles. Bart Tobin and Bob Samuelson, both from the Chippewa National Forest at Blackduck, have surveyed and banded eagles all over the Chippewa Forest for more than 20 years. They will show slides and a video of their exploits, some from high up in northern Minnesota white and red pines.

I have arranged for John Hart to do a program on wolves on August 24

An amazing event:

Wabana Township Ordinance

All members are familiar with the frustrated attempt last year to get the County Commissioners to pass an ordinance to implement its Comprehensive Land Use Plan—how many hours the Township Supervisors, Wabana Township residents and lake-shore owners spent in meetings; the delays, amendments, postponements made, and the final failure to pass anything.

Wabana Township Supervisors decided to take the version that had strong public approval and try it at the Township level. This meant a referendum, a vote by all the voters in the Township. The following is part of a letter sent before the vote to all the citizens of the Township:

To all Wabana Township residents

We would like to take this opportunity to explain our ordinance proposal and why we feel it is necessary that the township set its own ordinances in regard to the shore land overlay district (the area within 1000 Feet from the water). Our lakes are a very precious, yet fragile natural resource that we as residents of the township and visitors to our township enjoy. We play, fish and just simply enjoy the beauty of our lakes.

Our lakes are very sensitive to environmental changes in and around them. One of these changes is the development of the land surrounding our lakes. Over-development around lakes, as is evident in other counties around us can destroy the water quality, as well as the beauty of the shores.

Whether we live on a lake or away from our lakes, we all have an obligation to protect our lakes, so that we and future generations can enjoy them. In 2000 Itasca County adopted a new "Comprehensive Land Use Plan". In this plan it is very clear that protecting our lakes was of great importance. To carry out the "Comprehensive Land Use Plan", a new zoning ordinance was to be adapted by the county. After two years of work, the county could not agree on a new zoning ordinance concerning protecting our lakes from potential over-development, According to Minnesota statute 394.33, townships may set their own ordinances as long as the ordinances are as or more restrictive than the county ordinances. The board of supervisors of Wabana Township can and will recommend a zoning ordinance (copy enclosed) to the residents. The residents of Wabana Township must approve or reject the proposal by vote. We will have a special public meeting to discuss the issue on November 25, 2002 at the Wabana Community Center. If at this meeting it is decided to move ahead, the passing of the ordinance will be put to a vote in January 2003 in conjunction with the election of a new county commissioner to replace Tom Saxhaug, who was elected to State Senator. Please make an effort to attend the November 25, 2002 public meeting to discuss this issue...

Respectfully submitted
Ron Radecki, Township Chairman,
36743 Havenwood Drive

Most of us cannot imagine how many hours, and how much work, Ron and the other Supervisors put in, to make this clear to each voter in the Township before the February vote was taken.

But it passed the referendum, and by a very sizable plurality! When, in the future, we visit this beautiful lake, we will express profound thanks for their work to preserve it. And a special thanks goes to attorney Mark McCullough, another Wabana Township resident, who worked as tirelessly for the ordinance. For those who have not seen it, here is the entire Ordinance.

**WABANA TOWNSHIP ORDINANCE
REGULATING SUBDIVISIONS AND TOWERS
IN THE SHORELAND OVERLAY DISTRICT**

Article I-Purpose

This ordinance regulates the subdivision and development of land and communication towers within the Shoreland Overlay District within Wabana Township.

Article II-Creation of Shoreland Overlay District

The Shoreland Overlay District is hereby created within Wabana Township consistent with the Itasca County Comprehensive Land Use Plan adopted May 23, 2000, and the rules and regulations of the Department of Natural Resources, and is defined to be all land located in and from the shoreline of any take within Wabana Township to 1,000 feet from the ordinary high water level of such lake. This district includes that portion of lakes within Wabana Township and adjacent townships as to that portion of the lake within Wabana Township.

Article III-Authority

This ordinance has been adopted pursuant to the authority granted townships under Minn. Stat. 394.33 and 366.13 and in conformity therewith.

Article IV-Regulations

Section 1- Subdivision/Development No subdivision of land within the Shoreland Overlay District shall be allowed, unless each of the following requirements are met:

- a. Minimum lot sizes**
 - (a) Riparian lots 87,120 square feet;
 - (b) Nonriparian lots 108,900 square feet.
- b. Minimum width**, measured parallel to lake shoreline: Two hundred feet measured parallel to the lakeshore with riparian lots having 200 feet of actual lakeshore frontage.
- c. Allowed structures:** Only one single family dwelling, with up to three separate outbuildings, shall be allowed on any lot within Shoreland Overlay District, provided all structures meet the additional requirements of all other applicable laws.
- d. Restriction on lake access.** Only riparian lots shall have lake access. No nonriparian lots shall have direct or indirect lake access in any form or manner, whether deeded or private easement, license, road (whether public or private), trails, or otherwise. No subdivision plans or plats, including planned unit developments, shall be approved for recording or filing by the Itasca County Recorder or Registrar of Deeds if they do not meet these requirements. All instruments that convey real estate shall be submitted to the Itasca County Recorder and an administrative officer for review for a determination of compliance with this ordinance, pursuant to Minn. Stat. 394.37. Further, no building permits by the Wabana Town Building Commissioner shall be issued for structures to be constructed on and within the Shoreland Overlay District, unless each of these requirements are met, together with all other applicable laws.
- e. No variances allowed:** The Board of Supervisors of Wabana Township and its Town Building Commissioner, shall not have the authority to grant variances from these requirements.

Section 2-Towers: No tower, wireless telecommunication facility, or wind energy conservation system in excess of thirty-five (35) feet in height shall be allowed in the Shoreland Overlay District.

Article V -Application

This ordinance shall apply to all future subdivisions, developments and towers in Wabana Township on lands lying within the Shoreland Overlay District proposed after the effective date of this ordinance, regardless of the less restrictive restrictions in the current Itasca County ordinances or future ordinances and regardless of amendments to the land use plan, if any.

This ordinance shall not affect subdivisions, lots sizes, structures, existing developments, or towers that were lawful under prior ordinances and shall apply only prospectively from the effective date of this ordinance.

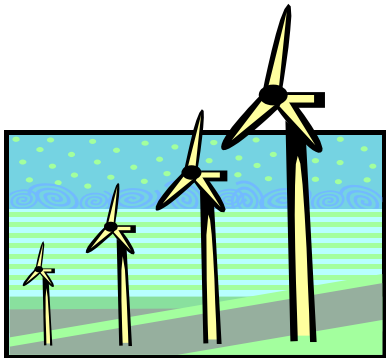
Article VI-Enforcement

The Board of Supervisors of Wabana Township shall continue to monitor subdivisions, developments, and construction of structures within Wabana Township, including those lying within the Shoreland Overlay District. All building structures within the Wabana Township Shoreland Overlay District shall require building permits signed and approved by a duly designated agent for Wabana Township, to be appointed by the Board of Supervisors as a Town Building Commissioner. The Town Building Commissioner may be appointed to serve with or without compensation and may be a Board Supervisor. If any subdivision, development, plan, plat, structure, or tower is proposed or commenced within the Shoreland Overlay District not in compliance with this ordinance or without the issuance of a building permit by the agent of Wabana Township, the Board of Supervisors shall notify the County Attorney to take appropriate action pursuant to Minn. Stat. 394.37, Subd. 3 to enforce the ordinance and to prevent, restrain, correct, or abate violations or threatened violations.

In addition, if a building or structure is or is proposed to be erected, constructed, reconstructed, altered, or used, or any land is or is proposed to be used in violation of 366.10 to 366.18 or a regulation or provision enacted or adopted by the board under 366.10 to 366.18, the board, the attorney of the county where the town is situated, the town attorney, the Board of Supervisors, the Town Building Commissioner, or any adjacent or neighboring property owner, or any landowner of land located in Wabana Township, may institute any appropriate action in Itasca County District Court to prevent, enjoin, abate, or remove the unlawful erection, construction, reconstruction, alteration, maintenance or use, pursuant to Minn. Stat. 366.16. A court may award the county, town, or resident reasonable attorney's fees and court costs incurred in enforcing this ordinance. A person who knowingly violates this ordinance is guilty of a misdemeanor under Minn. Stat. 366.181.

Article VII-Effective Date

This ordinance shall be effective on and after the eighth day of March 2003. A certified copy of this ordinance shall be filed with the County Recorder and Registrar of Titles of and for Itasca County pursuant to Minn. Stat. 394.33, for record.



WIND POWER MAKES LAKE SENSE.

(Thanks to Pokegama Lake Newsletter for part.) Wind-generated electricity is now the fastest growing renewable energy source on the planet--the United States has doubled its wind turbine numbers in 2001. It is now available to all of us who use Lake Country Power. If we will embrace technological improvements in energy *now*, we can lessen the future negative impacts of producing electricity by coal or other fuel, thus protecting our air and our lakes.

Until recently our main sources for electric power generation were coal and hydropower. The burning of coal produces several pollutants that are harmful to freshwater ecosystems. Nitrogen oxides and sulfur dioxides combine to form acid rain, and increase nitrogen deposition. Mercury, arsenic, cadmium, and lead are unregulated heavy metals that are toxic even in very small amounts, affecting everything from waterfowl to walleyes. We deposit these metals in our bodies through the consumption of fish. Unregulated carbon dioxide emissions from coal burning contribute to climate change that could impact our chain of lakes in many ways. Wind energy, on the other hand, is nonpolluting, renewable, and does not impact local ecosystems.

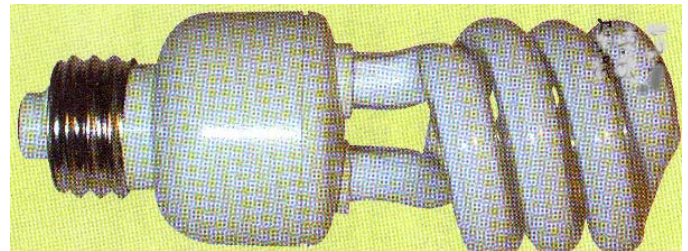
Wind power purchased through Lake Country Power comes from the Chandler Hills Wind Farm in southwest Minnesota. You might not really receive wind generated power, but in any case you will be providing capital to build and produce additional wind generators. It also sends a message that we

are interested in sustainable sources of electricity. The cost to produce wind energy is still slightly higher than coal-fueled energy. As a result, wind energy provided by local distributors includes a small surcharge to cover the additional costs of acquiring this renewable resource.

“Some members want the lowest price, period. Others want an opportunity to buy renewable energy, even if it costs a little more,” says Lake Country Power general manager Rick Lemonds. “Lake Country Power is delighted to bring this wind power option to our customers.”

Wind-generated electricity is sold in 100 kilowatt-hour blocks. You can buy as many of these blocks as desired, up to your average monthly kilowatt-hour usage. For example, if you use an average of 550 kilowatt-hours per month, you could purchase up to five 100 kilowatt-hour blocks.

Lake Country Power’s wind energy program is called “Wellspring,” and you can call 326-6671 and sign up over the phone. Lake Country Power charges \$1.50 / 100 kilowatt-hour block.



LIGHT SAVINGS.

Back in March, we heard that Lake Country Power was offering a \$4 rebate for to a member who purchases a fluorescent light bulb (CFL bulb) and goes into their office with a receipt. This is a special program to encourage more efficient energy use. We imagine that this is still in effect.

Some stores have bulbs on sale at the present time, at about 2 -100 watt (26w usage) for \$6.50 or 3 - 60 watt(14 watt usage) for \$5.50.



A FULL TESTING YEAR

The WCOLA tests its ten basins every three years, for three parameters: nitrogen, phosphorus, and chlorophyll. We test four times during the year: at ice out (early May), in spring (late June), summer stratification (middle to late August), and autumn overturn (early October). We pay to have our samples analyzed by a certified professional laboratory, and these forty analyses are quite expensive. We have been doing this for a decade and a half, and feel it is worth it to have a legally defensible baseline of data, showing the pristine waters we now have. People elsewhere who are involved with lakes with deteriorating water quality wish they had what we have—all they can do is guess, while we have facts.

Our sampling year is off to a good start! Bob and Mary Gephart and I went out on a beautiful May 3 and sampled seven of our ten basins. We could not get through the bridge from Interlachen to Trout, but Jack Velzen sampled the two Trout Lake basins, and John Adams took the Little Wabana sample. WCOLA takes a column of water in a 10-meter (about 30 foot) tube, mixes it in a bucket, and takes the sample from that. Bud Sage took the chilled samples to Cass Lake for the analysis. Thanks to all for the cooperation! Members who would like to be involved in this are urged to call the Water Quality Chair, Bob Gephart, 327-1545, and volunteer for June, August and (brrrr) October.

Mary also took Secchi disk readings at the seven places we sampled, and these early readings were interesting:

	(in feet)
Wabana North WN	16
Wabana Central WC	16
Wabana South WS	16
Wabana Wakeman WW	12
Interlachen IN	14 (aka Little Trout)
Bluewater North BN	21.5
Bluewater South BS	21



FROM BILL BERG: LOGGING CAMP

A 1900 logging camp you can visit! There are few old logging camp remains that are easily accessible, but there is one on the west shore of Murphy Lake.

To get there, drive about 3 miles on Co. 49 north of the junction of Co. 49 and Co. 59. Turn east on the Murphy Lake Road, just across from Frings Road. A short ways in, turn to the right, and proceed in to Murphy Lake. You will be on a logging sleigh grade most of the distance.

There are the remains of at least 8 buildings near the lake, recognizable by the berms that were once foundations. Sadly, some contain trash that belongs in a dump. One of the easternmost foundations is the blacksmith shop, placed there so the camp would not smell the putrid coal smoke.

The sleigh grade continues across the lake, and in winter some logs actually came from the Hanson Lake chain. All the logs from the Murphy Lake area were transported by sleigh 1.5 miles west to Wabana (on what is now Frings Road---also a sleigh grade). On the north fork of Frings Road and just past a clearing on the right, the logs were unloaded and sent down a long, gradual slope that ends up on the east shore of Buckman's Cove. To take them into Simmons Bay would have meant another 1/2 mile on the sleigh.

Logs were then boomed and hauled in spring to Wabana Creek, where they began their long journey downstream to sawmills in Minneapolis and beyond.



HOT OFF THE PRESSES

The USEPA's *Community Culture and the Environment: A Guide to Understanding a Sense of Place* is available for ordering. The Guide explores the concepts of community and culture and provides tools for identifying, assessing, and working cooperatively within the social dynamics and local values connected to environmental protection. These tools will help you define your community, identify stakeholders, enhance education and outreach, build partnerships and consensus, identify resources, plan and set goals, and integrate local realities with ecological issues. The Guide is designed for people involved in community-based initiatives, including those affiliated with community and watershed-based organizations, universities, and federal, state, tribal, and local agencies. Learn more about how this valuable resource can help you achieve your environmental protection goals by visiting <http://www.epa.gov/ecocommunity/tools/community.pdf>.

To request a FREE copy of the Guide, visit the National Service Center for Environmental Publications (NSCEP) website at <http://www.epa.gov/ncepihom/index.htm> or call 1-800-490-9198. The publication number is EPA 842-B-01-003. For more information about the Guide or Community Culture and the Environment trainings, send an email to CCEinfo@tetrattech.com or call 410/356-8993.

MEMBERSHIP, DUES, ETC.

No doubt you have it firmly in mind that the 2003-04 WCOLA fiscal year runs from July 1 through June 30, and therefore that the \$20 dues will be due on July 1 for members to remain in good standing. *But don't panic!* Instead of rushing around and mailing a check, we suggest you wait until you receive the June issue of the *Chain Letter*, which will (if all goes as planned) contain a dues-

paying envelope, with Cathy's name and address already on it, together with all the information that we usually have on a coupon—name, addresses, etc. This is a neat idea we had to make your dues-paying as painless and automatic as possible, and more like all your other bills. *Until June, then!*

NOW ABOUT NEW MEMBERS.

The Advisory Committee would like to award one of our new WCOLA logo coffee cups to any member who brings in a new member for 2003-04. *What a great offer!* You want to have a complete set of these mugs for your cabin or house anyway, and here is a super chance to start your set! All you have to do is recruit a new member, and have that member send in the coupon below with his/her check.



**WABANA CHAIN OF LAKES ASSOCIATION
NEW MEMBER COUPON**

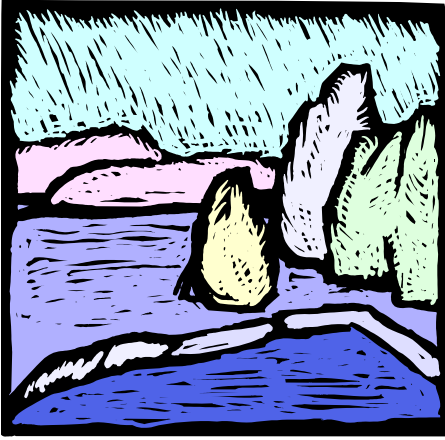
Please submit this coupon with your dues payment, so the member can receive his/her coffee cup.

New member's name

Recruited by:

Member's name

This member should be awarded a coffee cup.



SHORELINE MODIFIED?

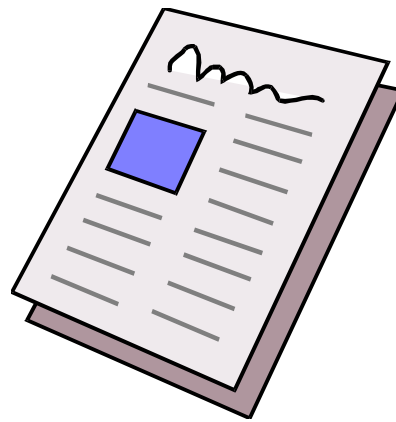
Quite a number of residents on our Chain of Lakes are returning to a lot of changes in their shorelines. An article in the Brainerd Dispatch helps explain what happened in during the unusual winter the lakes have endured. We thank the Dispatch, and also the Minnesota Lakes Association, for providing this reprint.

In a year of little snow, ice heaves are wrecking damage on shorelines in many parts of Minnesota lake country. Last winter the ice heaves and plates were on the lakes, in many cases in the middle. According to Dr. Jazque-line D. LaPerriere, pressure ridges form in in-frequent weather patterns. After ice forms on a lake in the fall the air temperature usually stays below freezing. If the temperature goes above freezing—as it did this year—ice expands like any other solid when it is warmed. Shorelines resist the outward movement of expanding ice. If the ice is weaker than the friction on shore, it heaves and cracks near the center of the lake, resulting in ice plates that slide past each other and rest one atop the other, leaving open water. With fewer ice heaves in the middle of the lake and thick, strong ice, shorelines take a beating.

Kenton Spading, a hydrologic engineer with the U.S. Army Corps of Engineers' Water Control Center, said the mid-winter phenomenon takes on two modes: ice heaves in the middle of a lake and ice sheets shoved into shore. Cold yet fluctuating temperatures and lack of snow have resulted in strong, thick ice and deeper than normal frost, causing the shoreline damage seen on many lakeshores. Daytime highs in mid-January reached the 50s. Nighttime lows sank to the 20s. From mid- to late-January the daytime highs were in the

teens and lows were below zero. Without snow to insulate the ice, air temperature variations went directly into the ice. On sunny days, in particular, ice absorbs more heat and expands to a great extent. The bulldozing of lake shorelines continued in the following weeks as the weather became very cold, thickening the ice further

Some folks will ooh and ahh, marveling at its strength and beauty. Others will swear and sweat as they shovel and shift the shoreline back to where they want it in the spring. For more information on ice heaves, see: <http://www.crrel.usace.army.mil/ierd>



JUNE NEWSLETTER PLANS.

- Minutes of the May meeting, from our inimitable Secretary, Sue Lick. We miss having her Minutes in this issue!
- A map from John Adams of our Chain of Lakes and its watershed.
- A first look at the results of our full-scale testing year.
- The Editor hopes we will have letters and pictures from YOU, on history, or anything else that is on your mind.

Fertilizing Lawn?
DON'T FORGET...
USE NO-PHOSPHORUS FERTILIZER!

Wabana Chain of Lakes Association Newsletter

**FIRST ISSUE
OF 2003**

**Come to the
First Meeting
on Saturday
May 24 at
8:30 A. M.
in the Town
Hall.**

Cathy Rudolph, Treasurer
Wabana Chain of Lakes Association
36542 Havenwood Drive
Grand Rapids, MN 55744